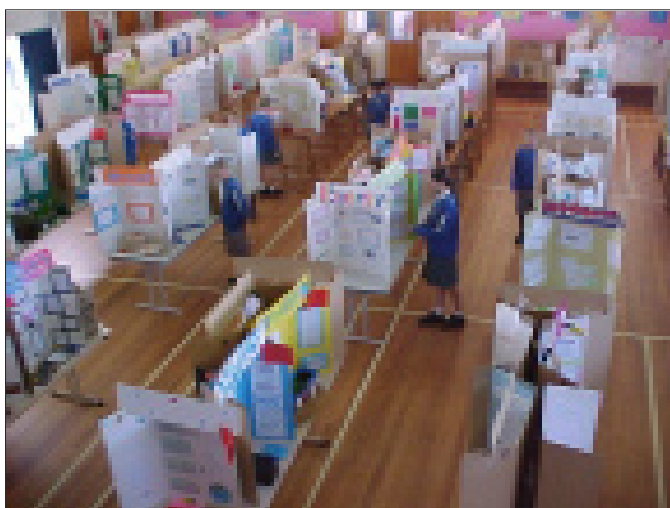




## Science Fair

Each year we hold a school science fair. The Fair is designed to place our students in the role of a scientist. They have to solve 'Real World' problems using the same methods scientists use.

The investigations they undertake help develop their "Fair Testing" skills. These skills are needed as students develop into independent learners.



Information Pamphlet No.16



### How can I Help?

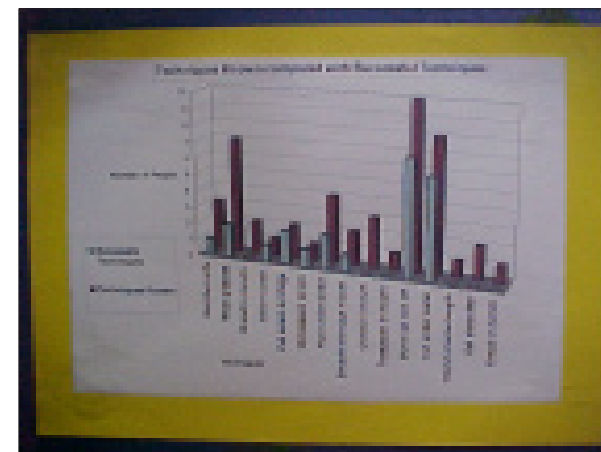
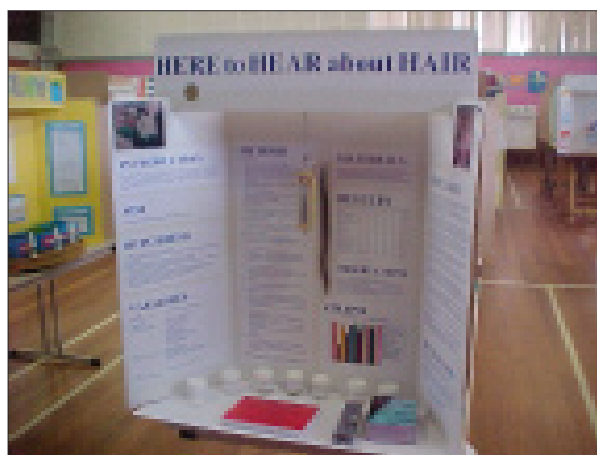
- Help them find an idea.

Your child's teacher has lists, books and Internet sites to help your child come up with an idea. If they seem stuck contact the teacher or check out these web sites.

<http://school.discovery.com/sciencefaircentral/>

<http://www.elmers.com/sciencefair/index.asp>

If they can count or measure it, they are on the right track.



- Let them know you are looking forward to visiting the Fair in **Term 3**.

Please visit the Fair. You need to allow at least 30 minutes. Many times we have had people say, "I've just dropped in to see my son's/daughter's investigation," only to find them still there an hour later. The display is set up on Wednesday and judged by a team of teachers.

The Fair is open for viewing on:

Wednesday	6 August	4:30pm - 7:00pm.
Thursday	7 August	8:00am - 7:00pm.
Friday	8 August	8:00am - 12:30pm.

Come and see the great science work our students are involved in.

Richard Coote  
Principal